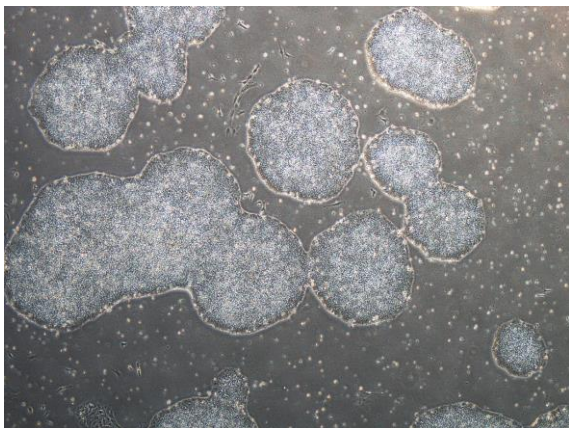
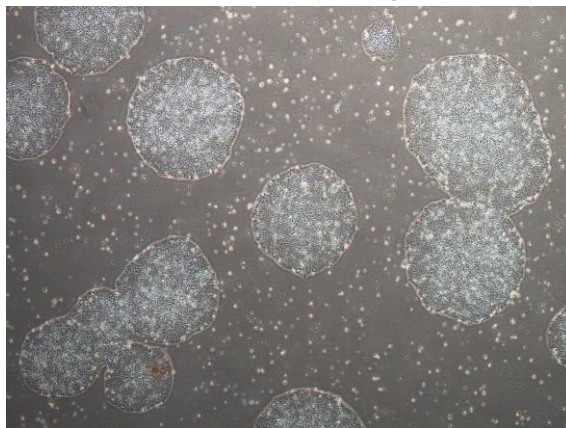


【 CiRA-j-1177 】 Morphology of iPSC colonies

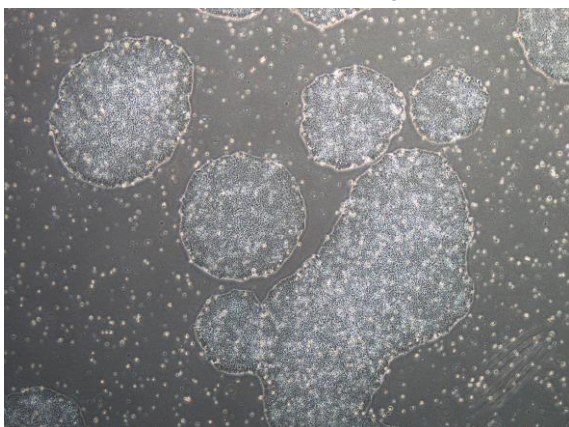
CiRA-j-1177-A: passage-2



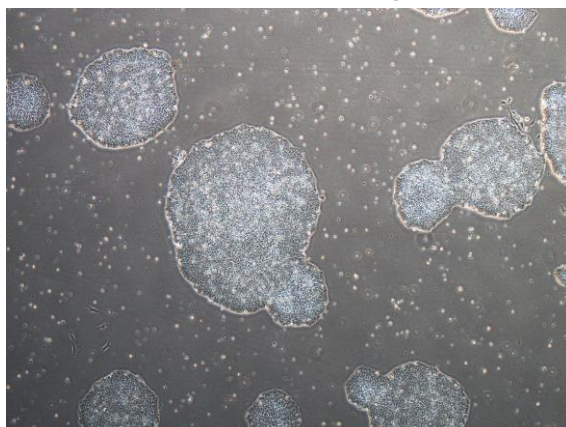
CiRA-j-1177-B: passage-2



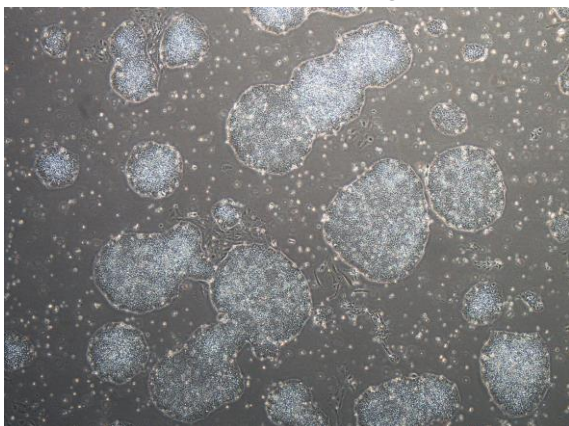
CiRA-j-1177-C: passage-2



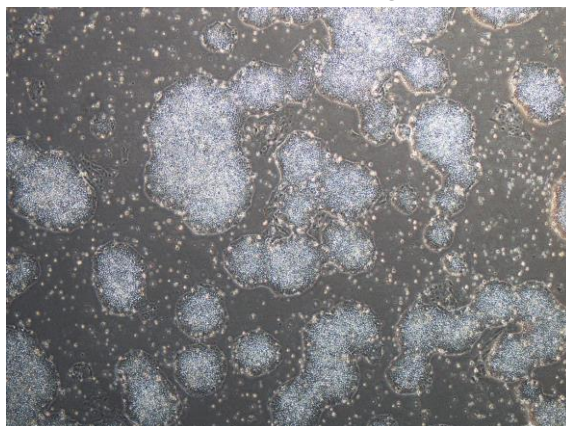
CiRA-j-1177-D: passage-2



CiRA-j-1177-E: passage-2



CiRA-j-1177-F: passage-2



(All images were captured at 4x magnification)